

## hCG Recombinant Rabbit Monoclonal Antibody Product Datasheet

Catalog# BX50075

Clone# BP6080

**Predicted Molecular Wt:** 13kDa  
**Species Cross-reactivity:** Human  
**Applications:** IHC-P

**Purity:** ProA affinity purified IgG  
**Form:** Liquid  
**Swissprot ID:** P01215

### Background:

Human chorionic gonadotropin antibody (hCG) is a glycoprotein hormone synthesized in syncytiotrophoblastic cells of placenta and in certain trophoblastic tumors. The hormone-specific alpha chains have molecular weights of 13 kDa. HCG is found in moles and choriocarcinoma, chorionic components of germ cell tumours, and syncytiotrophoblast like cells in seminoma/dysgerminoma and embryonal carcinoma. In diagnostic pathology, hCG is a useful marker for classification of germ cell tumours, identification of extragonadal germ cell tumours.

### Subcellular location:

Cytoplasm

### Recommended method:

Heat induced epitope retrieval with Tris-EDTA buffer (pH 9.0), primary antibody incubate at RT (18°C-25°C) for 30 minutes.

### Immunogen:

Synthetic peptide corresponding to residues within aa1-100 of hCG was used as an immunogen.

### Storage Buffer:

PBS 59%, Sodium azide 0.01%, Glycerol 40%, BSA 0.05%.

### Storage conditions:

-20°C

### Storage instructions:

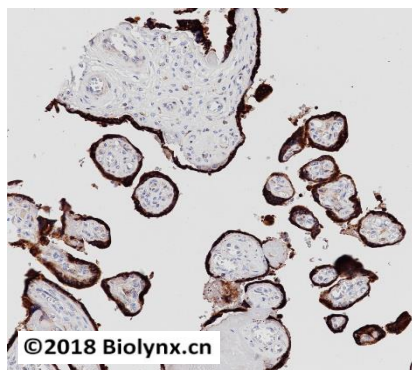
Shipped on blue ice. Upon delivery, aliquot, and store at -20°C. Avoid freeze / thaw cycles.

### Recommended Dilutions:


IHC-P: 1:100-1:200

### Background References:

1. Losch A, Kainz C. Acta Obstet Gynecol Scand. 1996 Sep;75(8):753-6.
2. Kido A, Mori M, Adachi Y, Yukaya H, Ishida T, Sugimachi K. Surg Today. 1996;26(12):966-70.



Immunohistochemistry (Formalin/PFA-fixed paraffin-embedded sections) analysis of placenta labelling hCG with BP6080. Heat mediated antigen retrieval was performed using Tris/EDTA buffer pH 9.0.

Product QC'd by: 

For research use only. Not for use in diagnostic or therapeutic applications.