

Cytokeratin 7 Recombinant Rabbit Monoclonal Antibody Product Datasheet

Catalog# BX50055

Clone# BP6060

Predicted Molecular Wt: 51kDa
Species Cross-reactivity: Human
Applications: IHC-P

Purity: ProA affinity purified IgG
Form: Liquid
Swissprot ID: P08729

Background:

Cytokeratin 7 in humans is a protein encoded by the KRT7 gene. It is always as a keratin pair with Cytokeratin 19.

Cytokeratin 7 is expressed on most ductal and glandular epithelium including lung, breast, bladder and female genital tract, but not in most gastrointestinal epithelium, prostate, hepatocyte and squamous epithelium. In tumor tissues, its expression is absent in colon cancer, prostate cancer and squamous carcinomas.

Cytokeratin 7 is often used in concert with Cytokeratin 20 and CDX-2 to aid in distinguishing ovarian, pulmonary and breast carcinomas (CK7+) from colon carcinomas (CK7-).

Subcellular location:

Cytoplasm

Recommended method:

Heat induced epitope retrieval with Tris-EDTA buffer (pH 9.0), primary antibody incubate at RT (18°C-25°C) for 30 minutes.

Immunogen:

Synthetic peptide corresponding to Cytokeratin 7 residues within aa1-100 of Cytokeratin 7 was used as an immunogen.

Storage Buffer:

PBS 59%, Sodium azide 0.01%, Glycerol 40%, BSA 0.05%.

Storage conditions:

-20°C

Storage instructions:

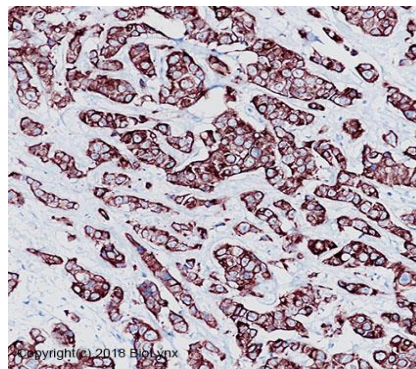
Shipped on blue ice. Upon delivery, aliquot, and store at -20°C. Avoid freeze / thaw cycles.

Recommended Dilutions:

IHC-P: 1:100-1:200

Background References:

1. Moll R, et al. Histochem Cell Biol. 2008 Jun;129(6):705-33.
2. Moll R, et al. Cell. 1982 Nov;31(1):11-24.



Immunohistochemistry (Formalin/PFA-fixed paraffin-embedded sections) analysis of breast cancer tissue labelling Cytokeratin 7 with BP6060. Heat mediated antigen retrieval was performed using Tris/EDTA buffer pH 9.0

Product QC'd by:



For research use only. Not for use in diagnostic or therapeutic applications.