

Brachyury Recombinant Rabbit Monoclonal Antibody Product Datasheet

Catalog# BX50241

Clone# BP6218

Predicted Molecular Wt: 47kDa

Purity: ProA affinity purified IgG

Species Cross-reactivity: Human

Form: Liquid

Applications: IHC-P

Swissprot ID: O15178

Background:

Brachyury protein, encoded by the T gene, is a transcription factor that is vital for the formation of posterior mesoderm and axial development during vertebrate embryogenesis. Human brachyury is expressed in the notochord, as well as in chordoma tumors that occur along the spine, making it a good marker for notochord and notochord-derived tumors. A common polymorphism in the human T gene has also been shown to be associated with development of the multifactorial neural tube defect, spina bifida.

Subcellular location:

Nuclear

Recommended method:

Heat induced epitope retrieval with Tris-EDTA buffer (pH 9.0), primary antibody incubate at RT (18°C-25°C) for 30 minutes.

Immunogen:

Recombinant fragment within Human Brachyury.

Storage Buffer:

PBS 59%, Sodium azide 0.01%, Glycerol 40%, BSA 0.05%.

Storage conditions:

-25°C to -18°C

Storage instructions:

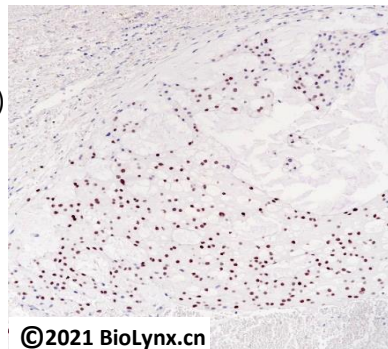
Shipped on blue ice. Upon delivery, aliquot, and store at -25°C to -18°C. Avoid freeze / thaw cycles.

Recommended Dilutions:


IHC-P: 1:100-1:200

Background References:

1. Vujovic, S. et al. (2006) J Pathol 209, 157-65.
2. Yang, X.R. et al. (2009) Nat Genet 41, 1176-8.



Immunohistochemistry (Formalin/PFA-fixed paraffin-embedded sections) analysis of human chordoma tissue labelling Brachyury with BP6218. Heat mediated antigen retrieval was performed using Tris/EDTA buffer pH 9.0

Product QC'd by: 

For research use only. Not for use in diagnostic or therapeutic applications.