

## ACE2 Recombinant Rabbit Monoclonal Antibody Product Datasheet

Catalog# BX50175

Clone# BP6153

**Predicted Molecular Wt:** 92kDa  
**Species Cross-reactivity:** Human  
**Applications:** IHC-P

**Purity:** ProA affinity purified IgG  
**Form:** Liquid  
**Swissprot ID:** Q9BYF1

### Background:

Carboxypeptidase which converts angiotensin I to angiotensin 1-9, a peptide of unknown function, and angiotensin II to angiotensin 1-7, a vasodilator. Also able to hydrolyze apelin-13 and dynorphin-13 with high efficiency. By cleavage of angiotensin II, may be an important regulator of heart function. By cleavage of angiotensin II, may also have a protective role in acute lung injury. Plays an important role in amino acid transport by acting as binding partner of amino acid transporter SL6A19 in intestine, regulating trafficking, expression on the cell surface, and its catalytic activity. Acts as a receptor for SARS coronavirus/SARS-CoV. Acts as a receptor for Human coronavirus NL63/HCoV-NL63.

### Subcellular location:

Membrane and Secreted

### Recommended method:

Heat induced epitope retrieval with Tris-EDTA buffer (pH 9.0), primary antibody incubate at RT (18°C-25°C) for 30 minutes.

### Immunogen:

Synthetic peptide within Human ACE2 aa 750-850. The exact sequence is proprietary.

### Storage Buffer:

PBS 59%, Sodium azide 0.01%, Glycerol 40%, BSA 0.05%.

### Storage conditions:

-25°C to -18°C

### Storage instructions:

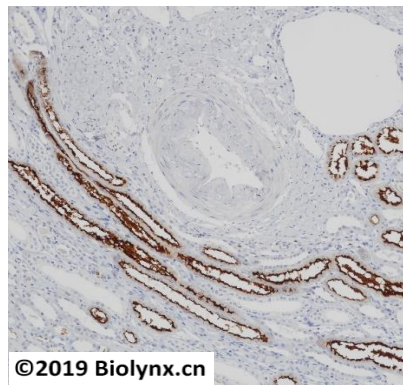
Shipped on blue ice. Upon delivery, aliquot, and store at -25°C to -18°C. Avoid freeze / thaw cycles.

### Recommended Dilutions:

IHC-P: 1:100-1:200

### Background References:

1. Donoghue M, et al. Circ. Res. 87:E1-E9(2000).
2. Hofmann H, et al. Natl. Acad. Sci. U.S.A. 102:7988-7993(2005).



Immunohistochemistry (Formalin/PFA-fixed paraffin-embedded sections) analysis of kidney tissue labelling ACE2 with BP6153. Heat mediated antigen retrieval was performed using Tris/EDTA buffer pH 9.0



Product QC'd by:

For research use only. Not for use in diagnostic or therapeutic applications.