

## Cytokeratin 5&6 Recombinant Rabbit Monoclonal Antibody Product Datasheet

Catalog# BX50144

Clone# BP6021&BP6065

**Predicted Molecular Wt:** 62/60kDa

**Species Cross-reactivity:** Human

**Applications:** IHC-P

**Purity:** ProA affinity purified IgG

**Form:** Liquid

**Swissprot ID:** P13647/P48668

### Background:

Cytokeratin 5 is a basic protein that is closely related to cytokeratin 6. They share similar tissue distribution and are found in various proportions in many non-keratinizing stratified squamous epithelia (e.g. tongue mucosa), as well as in basal epithelia of trachea, basal cells of epidermis, hair follicles, sebaceous and sweat glands of skin, luminal cells of the mammary gland, basal cells of prostate, urothelium, vagina and endocervical mucosa. Cytokeratins 5 and 6 are also expressed in basal cell epitheliomas, squamous cell carcinomas of skin, tongue, epiglottis and of the rectal-anal region.

Cytokeratin 5&6 is a useful aid for classification of epithelioid mesotheliomas.

### Subcellular location:

Cytoplasm

### Recommended method:

Heat induced epitope retrieval with Tris-EDTA buffer (pH 9.0), primary antibody incubate at RT (18°C-25°C) for 30 minutes.

### Immunogen:

Synthetic peptide according to the aa490-590 (C-terminal) of cytokeratin 5 was used as an immunogen. Synthetic peptide corresponding to Cytokeratin 6 residues within aa464-564 of Cytokeratin 6 was used as an immunogen.

### Storage Buffer:

PBS 59%, Sodium azide 0.01%, Glycerol 40%, BSA 0.05%.

### Storage conditions:

-25°C to -18°C

### Storage instructions:

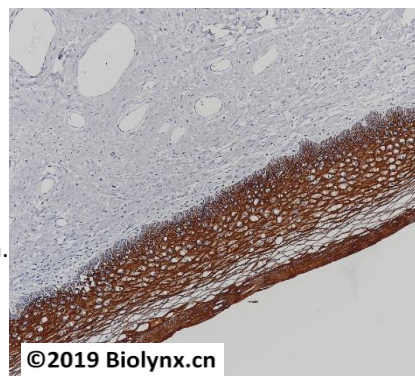
Shipped on blue ice. Upon delivery, aliquot, and store at -25°C to -18°C. Avoid freeze / thaw cycles.

### Recommended Dilutions:

IHC-P: 1:50-1:100

### Background References:

1. R Moll et al. Histochem Cell Biol (2008) 129:705–733.
2. R Moll et al. Cell, Vol. 31, 1 l-24, November 1982.



Immunohistochemistry (Formalin/PFA-fixed paraffin-embedded sections) analysis of cervix tissue labelling Cytokeratin 5&6 with BP6021&BP6065. Heat mediated antigen retrieval was performed using Tris/EDTA buffer pH 9.0

Product QC'd by: 

For research use only. Not for use in diagnostic or therapeutic applications.