

## Bcl-6 Recombinant Rabbit Monoclonal Antibody Product Datasheet

Catalog# BX50284

Clone# BP6261

**Predicted Molecular Wt:** 79kDa  
**Species Cross-reactivity:** Human  
**Applications:** IHC-P

**Purity:** ProA affinity purified IgG  
**Form:** Liquid  
**Swissprot ID:** P41182

### Background:

Bcl-6 is a transcriptional regulator gene which codes for a 706-amino-acid nuclear zinc finger protein. The mitogen-activated protein kinases, Erk1 and Erk2, but not JNK, phosphorylate BCL6 at multiple sites. Phosphorylation of BCL6 at Ser333 and Ser343 results in degradation of BCL6 by the ubiquitin/proteasome pathway in B cells. In addition, BCL6 is acetylated and its transcriptional repressor function is inhibited by the transcriptional co-activator p300.

Antibodies to this protein stain the germinal center cells in lymphoid follicles, follicular cells and interfollicular cells in Follicular Lymphoma, Diffuse Large B-Cell Lymphomas, Burkitt's Lymphoma, and the majority of the Reed-Sternberg cells in Nodular Lymphocyte-Predominant Hodgkin's Disease.

Bcl-6 combined with CD10 can be used to distinguish follicular lymphoma from other lymphomas. Bcl-6 combined with CD10 and MUM1 can be used for the classification of diffuse large B-cell lymphoma.

### Subcellular location:

Nucleus

### Recommended Method:

Heat induced epitope retrieval with Tris-EDTA buffer (pH 9.0), primary antibody incubate at RT (18°C-25°C) for 30 minutes.

### Immunogen:

Recombinant protein fragment of Bcl-6 was used as an immunogen. This information is proprietary to Biolynx.

### Storage Buffer:

PBS 59%, Sodium azide 0.01%, Glycerol 40%, BSA 0.05%.

### Storage Conditions:

-25°C to -18°C

### Shipment Instructions:

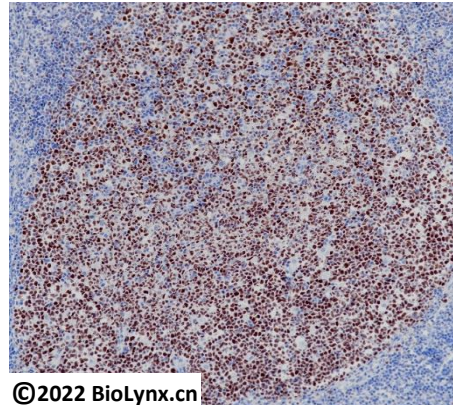
Shipped on blue ice. Upon delivery store at -25°C to -18°C. Avoid freeze / thaw cycles.

### Recommended Dilution:


IHC-P: 1:100-1:200

### Background References:

- Shvarts, A. et al. (2002) Genes Dev 16, 681-6.
- Bereshchenko, O.R. et al. (2002) Nat Genet 32, 606-13.



Immunohistochemistry (Formalin/PFA-fixed paraffin-embedded sections) analysis of human tonsil labelling Bcl-6 with BP6261.

Product QC'd by: 

For research use only. Not for use in diagnostic or therapeutic applications.